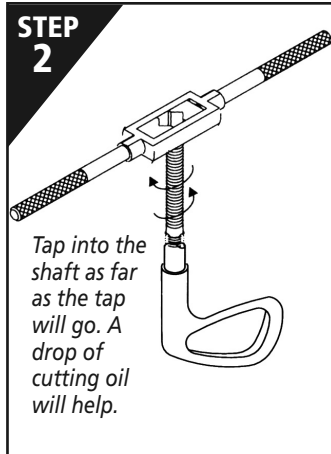


**STEP 1**

1-Assemble tap handle over the tap shank and tighten by rotating the handle bar.

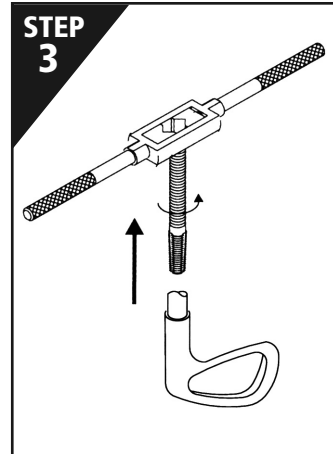
2-Insert tap inside shaft making sure it is centered and perpendicular to the broken shaft.



**STEP 2**

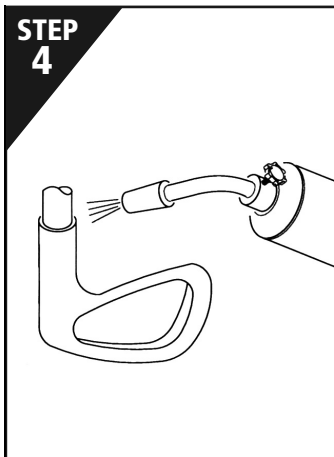
*Tap into the shaft as far as the tap will go. A drop of cutting oil will help.*

Rotate handle clockwise 1/2 turn at a time. Rotate handle counter clockwise 1/2 turn. Repeat as required. Rotating the tap counter clockwise helps break the chip away to prevent the tap thread from clogging.



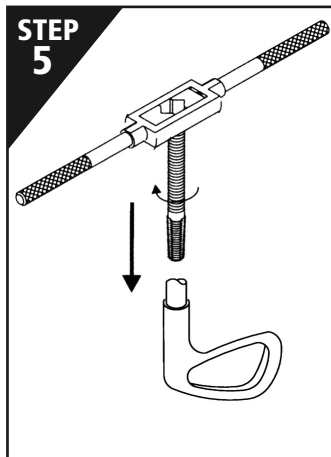
**STEP 3**

Wind back the tap off the broken shaft tip.



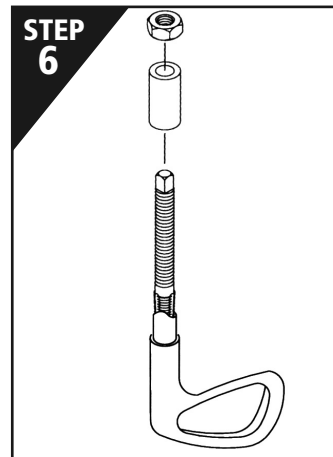
**STEP 4**

Heat up the clubhead hosel to break the epoxy bond.



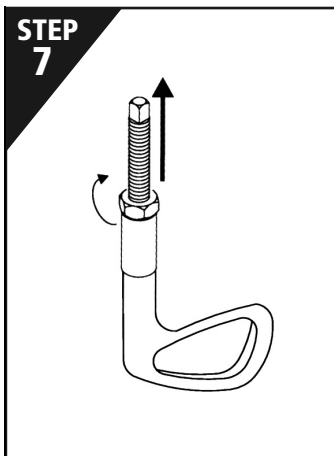
**STEP 5**

Screw the tap back into the hosel while hot. Wearing protective gloves is recommended.



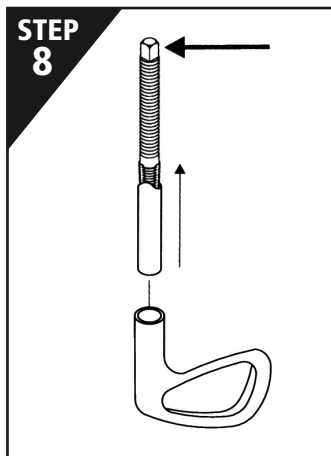
**STEP 6**

Remove tapping handle. Insert the spacer over the tap so it rides on the broken shaft tip. Screw nut over the tap shank.



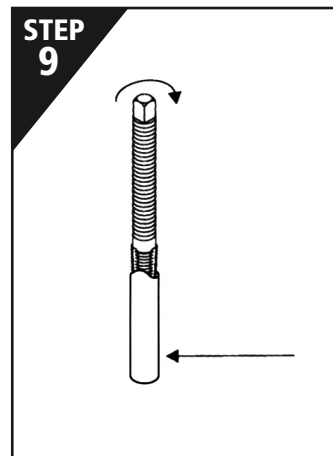
**STEP 7**

Use a wrench to tighten the nut to extract the broken shaft tip out of the hosel.



**STEP 8**

Using a pair of pliers to secure the tap shank, pull tap straight up to clear the broken bit.



**STEP 9**

To free the tap: Hold broken shaft bit with pliers and unscrew tap.

**WARNING!** The shaft extractor tap is made of super hard high strength steel. The tap may shatter if used improperly. Do not force tap when cutting threads. *Always apply 1/2 turn clockwise followed by 1/2 turn counter clockwise. Keep tap straight. Do not thread at an angle. WEAR PROTECTIVE GOGGLES AND GLOVES.*