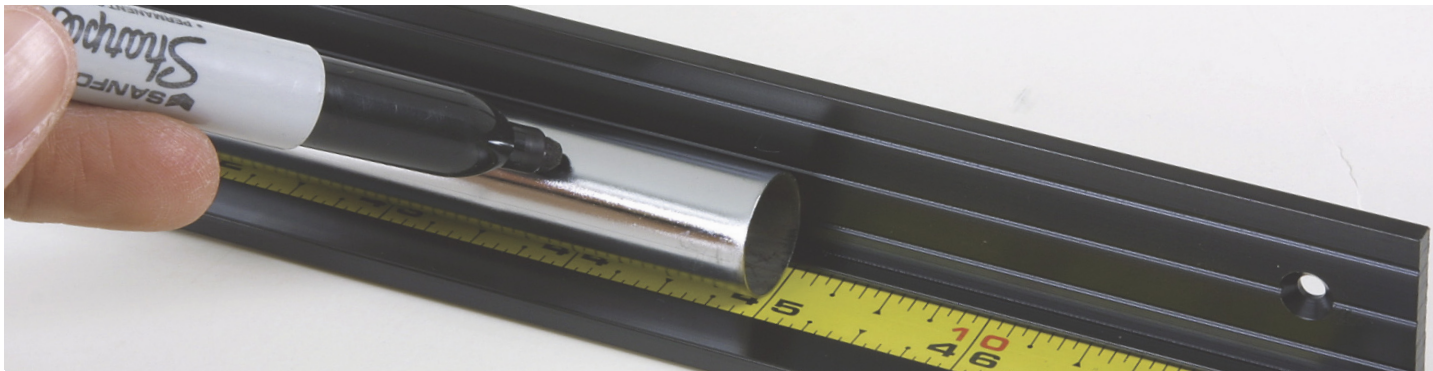


2018 Shaft TRIMMING INSTRUCTIONS



Everything you need to know for proper shaft trimming is included on pages 70-71. Each shaft in this catalog has a Shaft Trim Code listed. Consult the chart on page 71 to determine how much to trim off the shaft. **Unless noted, all directions are for TIP trimming. After tip trimming, trim to playing length from the butt.**

The trimming instructions on page 70 are recommended by the manufacturer. Any trimming other than what is listed may void any expressed or implied warranty. See below for additional information for each of the manufacturers.

UST MAMIYA

Recoil Hybrid (US0109), Proforce V2 Hybrid (US0105), MP5 Hybrid (US0069), dhi Series Hybrid (US0083)(A, R, S flexes): Tip trim: H1-0", H2-½", H3-1", H4-1 ½", H5-2".
dhi Series Hybrid (US0083)(L flex): Tip trim: H1-0", H2-0", H3-0", H4-½", H5-1".
 After tip trimming, cut to final playing length from butt.

MITSUBISHI CHEMICAL

Kuro Kage Black 2nd Gen Hybrid (MR0045), Tensei CK Blue Hybrid(MR0077): .370" tip - Tip trim: H1-0", H2-½", H3-1", H4-1½", H5-2".
 After tip trimming, cut to final playing length from butt.

GRAPHITE DESIGN

For the **YS Reloaded** woods, install 2" only in bore through driver designs.
 For **Tour AD DI, IZ, TP** woods, install 2.5" only in bore through woods.
YS Reloaded Hybrid (GD0042) Tip trim: 15°-18°-0", 19°-22°-½", 23°-26°-1", 27°-1". After tip trimming, cut to final playing length from butt.

PADERSON

Kinetixx TS-H Trajectory Series Hybrids (PK0103): Tip trim: 15°-17°-0", 18°-20°-½", 21°-23°-1", 24°-27°-1½", 28°+2". After tip trimming, cut to final playing length from butt.

FUJIKURA

Vista Pro Hybrids (FK0087): Tip trim: 15°-17°-0", 18°-20°-½", 21°-23°-1", 24°-27°-1½", 28°+2".
 After tip trimming, cut to final playing length from butt.

STEELFIBER

HLS 780 (AT0022), 880 (AT0023) Hybrids: Tip trim: 15°-18°- butt trim only, 19°-22°-½", 23°-26°-1", 27°+ -1½". After tip trimming, cut to final playing length from butt.

MATRIX

Deus Hybrid (MT2089): Tip trim: 14°-0", 16°-0", 19°-½", 22°-1", 25°-1½", 28°-2", 31°-2½"
 After tip trimming, cut to final playing length from butt.

*** If the shaft is not listed on this page the manufacture is not making a recommendation for hosel bore type adjustments. Follow the charts as listed on the next page with no change whether installing into a bore through, blind bore or standard bore.*

2018 TRIM CODES

IRON TRIM CODE	1	2	3	4	5	6	7	8	9	W
IR1	BUTT TRIM TO LENGTH ONLY									
IR2	0"	1/2"	1"	1 1/2"	2"	2 1/2"	3"	3 1/2"	4"	4 1/2"
IR3	0"	1/2"	1"	1 1/2"	2"	2 1/2"	3"	3 1/2"	4"	4"
IR4	1"	1 1/2"	2"	2 1/2"	3"	3 1/2"	4"	4 1/2"	5"	5 1/2"
IR5	2"	2 1/2"	3"	3 1/2"	4"	4 1/2"	5"	5 1/2"	6"	6 1/2"
IR6	0"	0"	1/2"	1"	1 1/2"	2"	2 1/2"	3"	3 1/2"	4"
IR7	0"	1/4"	1/2"	3/4"	1"	1 1/4"	1 1/2"	1 3/4"	2"	2"
IR9	0"	7/16"	1"	1 9/16"	2 1/8"	2 11/16"	3 1/4"	3 13/16"	4 3/8"	4 15/16"
IR10	1"	1 1/4"	1 1/2"	1 3/4"	2"	2 1/4"	2 1/2"	2 3/4"	3"	3"
IR11	1"	1 1/2"	2"	2 1/2"	3"	3 1/2"	4"	4 1/2"	5"	5"
IR12	2"	2 1/2"	3"	3 1/2"	4"	4 1/2"	5"	5 1/2"	6"	6"
IR13	3"	3 1/2"	4"	4 1/2"	5"	5 1/2"	6"	6 1/2"	7"	7 1/2"
IR14	1"	1 1/2"	2"	2 1/2"	3"	3 1/2"	4"	4 1/2"	5"	5 1/4"
IR15	3"	3 1/2"	4"	4 1/2"	5"	5 1/2"	6"	6 1/2"	7"	7 1/4"
IR16	0"	0"	0"	0"	1/2"	1"	1 1/2"	2"	2 1/2"	3"
IR18	N/A	N/A	0"	0"	0"	0"	0"	1/4"	1/2"	3/4"
IR20	0"	0"	0"	1/2"	1"	1 1/2"	2"	2 1/2"	3"	3"
IR21	0"	0"	1/2"	1"	1 1/2"	2"	2 1/2"	3"	3 1/2"	3 1/2"
IR22	N/A	N/A	0"	0"	0"	1/4"	1/2"	1"	1 1/2"	2"
IR23	N/A	N/A	0"	1/4"	1/2"	1"	1 1/2"	2 1/4"	3"	3 3/4"
IR24	1/2"	1"	1 1/2"	2"	2 1/2"	3"	3 1/2"	4"	4 1/2"	4 1/2"
IR25	0"	1/2"	1"	1 1/2"	2"	2 1/2"	3"	3 1/2"	4"	4 1/4"
IR26	2"	2 1/2"	3"	3 1/2"	4"	4 1/2"	5"	5 1/2"	6"	6 1/4"
IR27	Hybrid Heads	0"-41"	1/2"-40 1/2"		1"-40"		1 1/2"-39 1/2"		2"-39"	
IR29	1/2"	1"	1 1/2"	2"	2 1/2"	3"	3 1/2"	4"	4 1/2"	5"
IR30	TIP TRIM TO LENGTH ONLY									
IR31	0"	0"	0"	1/2"	1"	1 1/2"	2"	2 1/2"	3"	3 1/4"
IR32	Hybrid Heads	0"-14 deg.	1/2"-16 deg.		1"-18 deg.		1 1/2"-20 deg.		2"-22 deg.	
IR33	0"	5/8"	1 1/4"	1 7/8"	2 1/2"	3 1/8"	3 3/4"	4 3/8"	5"	5"
IR34	1"	1 5/8"	2 1/4"	2 7/8"	3 1/2"	4 1/8"	4 3/4"	5 3/8"	6"	6"
IR35	2"	2 5/8"	3 1/4"	3 7/8"	4 1/2"	5 1/8"	5 3/4"	6 3/8"	7"	7"
IR36	1 3/16"	1 3/4"	2 5/16"	2 7/8"	3 7/16"	4"	4 9/16"	5 1/8"	5 11/16"	6 1/4"
IR37	0"	0"	0"	1/2"	1"	1 1/2"	2"	2 1/2"	3"	3 1/2"
IR38	Hybrid Heads	0"-2or3 Hybrids		1/2"-4 Hybrid			1"-5 Hybrid			
IR39	1 1/2"	2"	2 1/2"	3"	3 1/2"	4"	4 1/2"	5"	5 1/2"	5 1/2"
WOOD TRIM CODE	1	2	3	4	5	6	7	8	9+	
W1	BUTT TRIM TO LENGTH ONLY									
W2	0"	1/4"	1/2"	3/4"	1"	1"	1"	1"	1"	1"
W3	0"	1/4"	1/2"	3/4"	1"	1 1/4"	1 1/2"	1 1/2"	1 1/2"	1 1/2"
W4	0"	1/4"	1/2"	3/4"	1"	1 1/4"	1 1/2"	1 3/4"	2"	2"
W5	0"	1/4"	1/2"	1"	1 1/2"	1 1/2"	1 1/2"	1 1/2"	1 1/2"	1 1/2"
W6	0"	1/2"	1"	1 1/2"	2"	2"	2"	2"	2"	2"
W7	0"	1/2"	1"	1 1/2"	2"	2 1/4"	2 1/2"	2 3/4"	3"	3"
W8	0"	N/A	1/2"	N/A	3/4"	N/A	1"	N/A	1"	1"
W9	0"	1/4"	1/2"	3/4"	1"	1 1/2"	1 1/2"	1 1/2"	1 1/2"	1 1/2"
W11	1"	1 1/4"	1 1/2"	1 3/4"	2"	2"	2"	2"	2"	2"
W12	1"	1 1/4"	1 1/2"	1 3/4"	2"	2 1/4"	2 1/2"	2 3/4"	3"	3"
W13	1"	1 1/2"	2"	2 1/2"	3"	3"	3"	3"	3"	3"
W14	0"	0"	1"	1 1/4"	1 1/2"	2"	2"	2"	2"	2"
W15	2"	2 1/4"	2 1/2"	3"	3 1/2"	3 1/2"	3 1/2"	3 1/2"	3 1/2"	3 1/2"
W16	2"	2 1/4"	2 1/2"	2 3/4"	3"	3"	3"	3"	3"	3"
W17	N/A	N/A	0"	N/A	1/2"	N/A	3/4"	N/A	1"	1"
W18	0"	N/A	1"	N/A	1 1/2"	N/A	N/A	N/A	N/A	N/A
W19	N/A	0"	0"	1/2"	1"	1 1/2"	2"	2"	2"	2"
W20	2"	2 1/4"	2 1/2"	2 3/4"	3"	3 1/4"	3 1/2"	3 1/2"	3 1/2"	3 1/2"
W21	0"	1"	1"	1"	1"	1"	1"	1"	1"	1"
W23	0"	0"	1"	1 1/4"	1 1/2"	1 3/4"	2"	2 1/4"	2 1/2"	2 1/2"
W27	0"	0"	1/4"	1/2"	3/4"	3/4"	3/4"	3/4"	3/4"	3/4"
W28	2 1/2"	2 1/2"	2 3/4"	3"	3 1/4"	3 1/4"	3 1/4"	3 1/4"	3 1/4"	3 1/4"
W31	0"	1/2"	1"	1 1/2"	2"	2 1/4"	2 1/2"	2 1/2"	2 1/2"	2 1/2"
W32	0"	0"	0"	0"	1/2"	3/4"	1"	1 1/4"	1 1/2"	1 1/2"